

'INNOVATORS OF FIRE TECHNOLOGY'

SALAMANDER DOOR HOLDER

THE SAFE, LEGAL, COST EFFECTIVE SOLUTION

SAVES LIVES AND MEETS LEGAL REQUIREMENTS

- Restriction-free movement around the building in line with the Disability Provision under the Equality Act 2010 - Salamander holds up to 99 fire doors in the open position.
- Suitable for all installations - Salamander meets the most stringent protection measures needed at crucial fire exits requiring Critical Actuation (Category A protection, as defined by BS7273 Part 4 (e.g. fire doors at the top of stairwells).
- Salamander is approved to EN1155 and is CE marked under the CPR (Construction Products Regulation).

SAVES TIME AND REDUCES COSTS

- Installation time reduced by up to 90% - Innovative WIRE-FREE radio technology means quick and easy fitting with no more unsightly cables and no need for major renovation.
- Flexibility - Salamander door holders can be relocated to different doors as building layout changes. Its large range of mounting options includes stands, chain mounted keepers and floor mounting brackets. Booster units can be easily added to cover large installations.
- Prolonged fire door life due to no wear and tear - Salamander avoids potential floor damage, door warping and false activations caused by acoustic systems.
- Low maintenance - the innovative magnet conserves battery power, which means the system has an expected battery life of up to two years. Visible signal indicates battery and radio strength for any door holder. Low battery warning one month in advance.

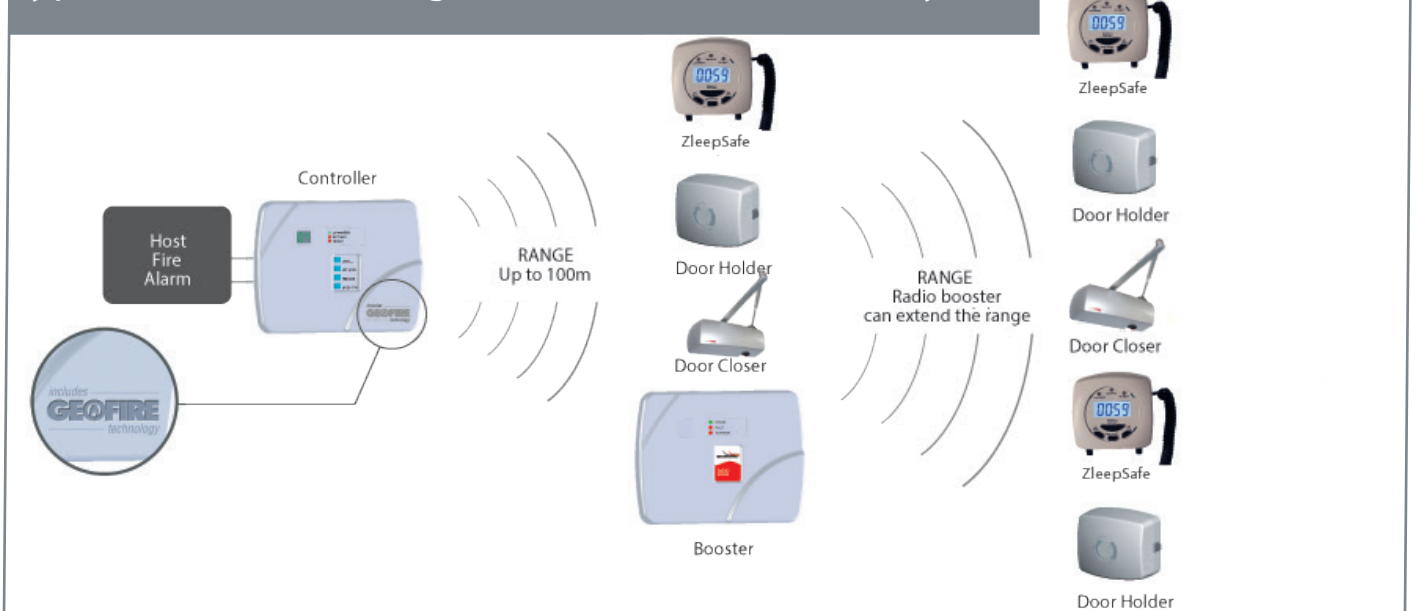


SALAMANDER

Technical Information

Display	Controller Booster	LEDs indicate system working, low battery, low signal, unit number LEDs indicate the unit state, power, transmit, fault
Fault monitored	Controller Booster Door Holder	Automatic 2 hour status check of all holder, closer & booster units Status/fault display & fail safe Release on low battery, communications failure, fire or fault
Controller interface	24Vdc signal or volt-free relay contacts for fire and fault response	
Radio frequency	868MHz to European standard. Radio licence exempt.	
Range	Typically 40-50m (site specific). Range can be extended by up to 8 times with additional boosters. Exact specification verifiable by a site survey	
RF interference	Controller will scan the area for 'quiet' channels. There are 14 channels available. Very low duty cycle	
Power supply	Controller Booster Door Holder	230Vac 50Hz mains supply with 6 hour battery back-up 230Vac 50Hz mains supply with 6 hour battery back-up 2 x C Cell batteries
Door holder battery life	Up to 2 years	
Holding force	200 Newtons (45 lbs force), approved to door closer power size 5	
Housing material	ABS	
Compliance	Suitable for Critical Actuation (Category A) as defined by BS 7273-4, ETSI EN300 220 (licence exempt) BS EN1155, CE Marked, EMC Directive, Constructive Products Regulation	

Typical schematic diagram of full Salamander system



Product	Dimensions (HxWxD)	Weight (g)	Part No.
Controller	196 x 280 x 42	350	3-80-0012
Booster	196 x 280 x 42	350	3-80-0014
ZleepSafe	115 x 115 x 115	380	3-80-0040
Door Holder	97 x 119 x 66	750	3-80-0013
Door Closer	328 x 110 x 100	2500	3-80-0050/51